

| Mile Post | Stream ID | Stream Name | Right of Way | Proposed Crossing Method | Comment / Crossing Description |
|-----------|-----------|-------------------------------------|-------------------------|--------------------------|---|
| 99.0 | V-BE-AS-3 | Unnamed Tributary to Lake Champlain | North Lake Road, Benson | At Culvert | Culvert #100028; 24-inch CMP; low gradient between wetlands |



V-BE-AS-3 Culvert Inlet



V-BE-AS-3 Upstream Channel

| Mile Post | Stream ID | Stream Name | Right of Way | Proposed Crossing Method | Comment / Crossing Description |
|-----------|-----------|-------------------------------------|-------------------------|--------------------------|---|
| 99.0 | V-BE-AS-3 | Unnamed Tributary to Lake Champlain | North Lake Road, Benson | At Culvert | Culvert #100028; 24-inch CMP; low gradient between wetlands |



V-BE-AS-3 Culvert Outlet / Downstream Wetland (V-BE-AW-4)

| Mile Post | Stream ID | Stream Name | Right of Way | Proposed Crossing Method | Comment / Crossing Description |
|-----------|-----------|---------------------------------------|-----------------------------|--------------------------|---|
| 100.7 | V-BE-S-8 | Unnamed Tributary to Hubbardton River | Old North Lake Road, Benson | Replace Culvert | Culvert #100036; 24-inch HDPE; gravel substrate |



V-BE-S-8 Upstream Wetland (V-BE-W-14)



V-BE-S-8 Culvert Outlet

| Mile Post | Stream ID | Stream Name | Right of Way | Proposed Crossing Method | Comment / Crossing Description |
|-----------|-----------|---------------------------------------|-----------------------------|--------------------------|---|
| 100.7 | V-BE-S-8 | Unnamed Tributary to Hubbardton River | Old North Lake Road, Benson | Replace Culvert | Culvert #100036; 24-inch HDPE; gravel substrate |



V-BE-S-8 Downstream Channel

| Mile Post | Stream ID | Stream Name | Right of Way | Proposed Crossing Method | Comment / Crossing Description |
|-----------|------------|---------------------------------------|-----------------------------|--------------------------|--------------------------------|
| 101.2 | V-BE-AS-10 | Unnamed Tributary to Hubbardton River | Old North Lake Road, Benson | At Culvert | Culvert # 100039; 36-inch HDPE |



V-BE-AS-10 Culvert Inlet / Upstream Wetland (V-BE-AW-17)



V-BE-AS-10 Culvert Outlet

| Mile Post | Stream ID | Stream Name | Right of Way | Proposed Crossing Method | Comment / Crossing Description |
|-----------|------------|---------------------------------------|----------------------|--------------------------|--------------------------------|
| 102.2 | V-BE-S-100 | Unnamed Tributary to Hubbardton River | VT Route 22A, Benson | OTE | Culvert #21799; 24-inch CMP |



V-BE-S-100 Culvert Inlet / Upstream Wetland V-BE-AW-100

| Mile Post | Stream ID | Stream Name | Right of Way | Proposed Crossing Method | Comment / Crossing Description |
|-----------|------------|---------------------------------------|----------------------|--------------------------|--------------------------------|
| 102.2 | V-BE-S-100 | Unnamed Tributary to Hubbardton River | VT Route 22A, Benson | OTE | Culvert #21799; 24-inch CMP |



V-BE-S-100 Outlet / Downstream Wetland V-BE-AW-100

| Mile Post | Stream ID | Stream Name | Right of Way | Proposed Crossing Method | Comment / Crossing Description |
|-----------|------------|---------------------------------------|----------------------|--------------------------|-----------------------------------|
| 103.1 | V-BE-S-102 | Unnamed Tributary to Hubbardton River | VT Route 22A, Benson | Over Culvert | Culvert# 21786; 6-ft concrete box |



V-BE-S-102 Culvert Inlet



V-BE-S-102 Upstream Channel

| Mile Post | Stream ID | Stream Name | Right of Way | Proposed Crossing Method | Comment / Crossing Description |
|-----------|------------|---------------------------------------|----------------------|--------------------------|-----------------------------------|
| 103.1 | V-BE-S-102 | Unnamed Tributary to Hubbardton River | VT Route 22A, Benson | Over Culvert | Culvert# 21786; 6-ft concrete box |



V-BE-S-102 Culvert Outlet



V-BE-S-102 Downstream Channel

| Mile Post | Stream ID | Stream Name | Right of Way | Proposed Crossing Method | Comment / Crossing Description |
|-----------|------------|------------------|----------------------|--------------------------|---|
| 104.7 | V-BE-S-106 | Hubbardton River | VT Route 22A, Benson | HDD | HDD under Hubbardton River; existing structure is twin multi-plate pipe arches; Culverts #100042 & 100043 |



V-BE-S-106 double culvert inlet

| Mile Post | Stream ID | Stream Name | Right of Way | Proposed Crossing Method | Comment / Crossing Description |
|-----------|------------|------------------|----------------------|--------------------------|---|
| 104.7 | V-BE-S-106 | Hubbardton River | VT Route 22A, Benson | HDD | HDD under Hubbardton River; existing structure is twin multi-plate pipe arches; Culverts #100042 & 100043 |



V-BE-S-106 Downstream Channel

| Mile Post | Stream ID | Stream Name | Right of Way | Proposed Crossing Method | Comment / Crossing Description |
|-----------|------------|---------------------------------------|----------------------|--------------------------|--------------------------------|
| 105.1 | V-BE-S-109 | Unnamed Tributary to Hubbardton River | VT Route 22A, Benson | OTE | Culvert #21769; 30-inch CMP |



V-BE-S-109 Upstream Channel

| Mile Post | Stream ID | Stream Name | Right of Way | Proposed Crossing Method | Comment / Crossing Description |
|-----------|------------|---------------------------------------|----------------------|--------------------------|--------------------------------|
| 105.1 | V-BE-S-109 | Unnamed Tributary to Hubbardton River | VT Route 22A, Benson | OTE | Culvert #21769; 30-inch CMP |



V-BE-S-109 Downstream Channel

| Mile Post | Stream ID | Stream Name | Right of Way | Proposed Crossing Method | Comment / Crossing Description |
|-----------|-----------|-------------------------------------|--------------------------|--------------------------|--------------------------------|
| 106.2 | V-WH-S-4 | Unnamed Tributary to Poultney River | VT Route 22A, West Haven | OTE | Culvert #13400; 30-inch HDPE |



V-WH-S-4 Culvert Inlet



V-WH-S-4 Downstream Channel

| Mile Post | Stream ID | Stream Name | Right of Way | Proposed Crossing Method | Comment / Crossing Description |
|-----------|-----------|-------------------------------------|--------------------------|--------------------------|--------------------------------|
| 106.2 | V-WH-S-4 | Unnamed Tributary to Poultney River | VT Route 22A, West Haven | OTE | Culvert #13400; 30-inch HDPE |



V-WH-S-4 Culvert Outlet

| Mile Post | Stream ID | Stream Name | Right of Way | Proposed Crossing Method | Comment / Crossing Description |
|-----------|-----------|-------------------------------------|--------------------------|--------------------------|---|
| 108.1 | V-WH-S-2 | Unnamed Tributary to Poultney River | VT Route 22A, West Haven | At Culvert | OTE V-WH-S-2, Culvert and V-WH-S-1. Jack and bore under VT-22A; Culvert #13377; 24-inch CMP |



V-WH-S-2 Upstream Channel



V-WH-S-2 Culvert Inlet

| Mile Post | Stream ID | Stream Name | Right of Way | Proposed Crossing Method | Comment / Crossing Description |
|-----------|-----------|-------------------------------------|--------------------------|--------------------------|---|
| 108.1 | V-WH-S-2 | Unnamed Tributary to Poultney River | VT Route 22A, West Haven | At Culvert | OTE V-WH-S-2, Culvert and V-WH-S-1. Jack and bore under VT-22A; Culvert #13377; 24-inch CMP |



V-WH-S-2 Culvert Outlet

| Mile Post | Stream ID | Stream Name | Right of Way | Proposed Crossing Method | Comment / Crossing Description |
|-----------|-----------|-------------------------------------|--------------------------|--------------------------|-------------------------------------|
| 108.4 | V-FH-S-25 | Unnamed Tributary to Poultney River | VT Route 22A, Fair Haven | HDD | Culvert #13371; HDD under V-FH-S-25 |



V-FH-S-25 Culvert Outlet



V-FH-S-25 Downstream Channel

| Mile Post | Stream ID | Stream Name | Right of Way | Proposed Crossing Method | Comment / Crossing Description |
|-----------|-----------|-------------------------------------|--------------------------|--------------------------|-------------------------------------|
| 108.4 | V-FH-S-25 | Unnamed Tributary to Poultney River | VT Route 22A, Fair Haven | HDD | Culvert #13371; HDD under V-FH-S-25 |



V-FH-S-25 Upstream Channel

| Mile Post | Stream ID | Stream Name | Right of Way | Proposed Crossing Method | Comment / Crossing Description |
|-----------|-----------|--------------------------------|--------------------------|--------------------------|--------------------------------|
| 109.6 | V-FH-S-17 | Unnamed Tributary to Mud Brook | VT Route 22A, Fair Haven | At Culvert | Culvert #13358; 48-inch CMP |



V-FH-S-17 Upstream Channel



V-FH-S-17 Culvert Inlet

| Mile Post | Stream ID | Stream Name | Right of Way | Proposed Crossing Method | Comment / Crossing Description |
|-----------|-----------|-------------|------------------------|--------------------------|---|
| 110.2 | V-FH-S-13 | Mud Brook | US Route 4, Fair Haven | HDD | Culvert # 13348; HDD under V-FH-S-15 and Mud Brook while crossing under US-4 ramp |



V-FH-S-13 Downstream Channel

| Mile Post | Stream ID | Stream Name | Right of Way | Proposed Crossing Method | Comment / Crossing Description |
|-----------|-----------|-------------|------------------------|--------------------------|---|
| 110.2 | V-FH-S-13 | Mud Brook | US Route 4, Fair Haven | HDD | Culvert # 13348; HDD under V-FH-S-15 and Mud Brook while crossing under US-4 ramp |



V-FH-S-13 Upstream Channel

| Mile Post | Stream ID | Stream Name | Right of Way | Proposed Crossing Method | Comment / Crossing Description |
|-----------|-----------|--------------------------------|------------------------|--------------------------|--|
| 111.0 | V-FH-S-5 | Unnamed Tributary to Mud Brook | US Route 4, Fair Haven | At Culvert | Culvert #30118; 48-inch CMP; HDD under V-FH-S-4, V-FH-S-5, V-FH-S-26, Dutch Ave, and US-4 ramp |



V-FH-S-5 Downstream Channel

| Mile Post | Stream ID | Stream Name | Right of Way | Proposed Crossing Method | Comment / Crossing Description |
|-----------|-----------|--------------------------------------|------------------------|--------------------------|--------------------------------|
| 111.8 | V-FH-S-10 | Unnamed Tributary to Castleton River | US Route 4, Fair Haven | At Culvert | Culvert #30125; 48-inch CMP |



V-FH-S-10 Culvert Outlet

| Mile Post | Stream ID | Stream Name | Right of Way | Proposed Crossing Method | Comment / Crossing Description |
|-----------|------------|--------------------------------------|-----------------------|--------------------------|--------------------------------|
| 113.2 | V-CN-S-101 | Unnamed Tributary to Castleton River | US Route 4, Castleton | OTE | Culvert #30174; 60-inch CMP |



V-CN-S-101 Upstream Channel



V-CN-S-101 Upstream Channel

| Mile Post | Stream ID | Stream Name | Right of Way | Proposed Crossing Method | Comment / Crossing Description |
|-----------|-----------|--------------------------------------|-----------------------|--------------------------|---|
| 115.4 | V-CN-S-12 | Unnamed Tributary to Castleton River | US Route 4, Castleton | HDD | Culvert #30275, 48-inch CMP, boulder/cobble substrate |



V-CN-S-12 Upstream Wetland

| Mile Post | Stream ID | Stream Name | Right of Way | Proposed Crossing Method | Comment / Crossing Description |
|-----------|-----------|--------------------------------------|-----------------------|--------------------------|---|
| 115.4 | V-CN-S-12 | Unnamed Tributary to Castleton River | US Route 4, Castleton | HDD | Culvert #30275, 48-inch CMP, boulder/cobble substrate |



V-CN-S-12 Culvert Outlet



V-CN-S-12 Downstream Channel

| Mile Post | Stream ID | Stream Name | Right of Way | Proposed Crossing Method | Comment / Crossing Description |
|-----------|-----------|--------------------|-----------------------|--------------------------|--|
| 116.5 | V-CN-S-8 | North Breton Brook | US Route 4, Castleton | HDD | Culvert #100050; HDD under North Breton Brook, E Hubbardton Rd, and US-4 ramps |



V-CN-S-8 Upstream Channel



V-CN-S-8 Box Culvert

| Mile Post | Stream ID | Stream Name | Right of Way | Proposed Crossing Method | Comment / Crossing Description |
|-----------|-----------|--------------------|-----------------------|--------------------------|--|
| 116.5 | V-CN-S-8 | North Breton Brook | US Route 4, Castleton | HDD | Culvert #100050; HDD under North Breton Brook, E Hubbardton Rd, and US-4 ramps |



V-CN-S-8 Upstream Channel



V-CN-S-8 Downstream Channel

| Mile Post | Stream ID | Stream Name | Right of Way | Proposed Crossing Method | Comment / Crossing Description |
|-----------|-----------|--------------------------------------|-----------------------|--------------------------|--------------------------------|
| 117.7 | V-CN-S-4 | Unnamed Tributary to Castleton River | US Route 4, Castleton | At Culvert | Culvert #30347; 48-inch RCP |



V-CN-S-4 Upstream Channel



V-CN-S-4 Upstream Channel

| Mile Post | Stream ID | Stream Name | Right of Way | Proposed Crossing Method | Comment / Crossing Description |
|-----------|-----------|--------------------------------------|-----------------------|--------------------------|--------------------------------|
| 117.7 | V-CN-S-4 | Unnamed Tributary to Castleton River | US Route 4, Castleton | At Culvert | Culvert #30347; 48-inch RCP |



V-CN-S-4 Culvert Inlet



V-CN-S-4 Culvert Outlet

| Mile Post | Stream ID | Stream Name | Right of Way | Proposed Crossing Method | Comment / Crossing Description |
|-----------|-----------|--------------------------------------|-----------------|--------------------------|--------------------------------|
| 119.6 | T-IR-S4 | Unnamed Tributary to Castleton River | US Route 4, Ira | At Culvert | Culvert # 100051; 48-inch CMP |



T-IR-S4 Culvert Inlet

| Mile Post | Stream ID | Stream Name | Right of Way | Proposed Crossing Method | Comment / Crossing Description |
|-----------|-----------|--------------------------------------|-----------------|--------------------------|--------------------------------|
| 119.6 | T-IR-S4 | Unnamed Tributary to Castleton River | US Route 4, Ira | At Culvert | Culvert # 100051; 48-inch CMP |



T-IR-S4 Upstream Channel

| Mile Post | Stream ID | Stream Name | Right of Way | Proposed Crossing Method | Comment / Crossing Description |
|-----------|-----------|--------------------------------------|--------------------------|--------------------------|--------------------------------|
| 121.1 | T-WR-S34 | Unnamed Tributary to Castleton River | US Route 4, West Rutland | At Culvert | Culvert #30453; 36-inch CMP |



T-WR-S34 Culvert Outlet



T-WR-S34 Downstream Channel

| Mile Post | Stream ID | Stream Name | Right of Way | Proposed Crossing Method | Comment / Crossing Description |
|-----------|-----------|-----------------|--------------------------|--------------------------|---|
| 121.6 | T-WR-S29 | Castleton River | US Route 4; West Rutland | HDD | HDD under Castleton River and railroad tracks |



T-WR-S29 Downstream Channel



T-WR-S29 Upstream Channel

| Mile Post | Stream ID | Stream Name | Right of Way | Proposed Crossing Method | Comment / Crossing Description |
|-----------|-----------|--------------------------------------|--------------------------|--------------------------|---|
| 123.3 | T-WR-S18 | Unnamed Tributary to Clarendon River | US Route 4; West Rutland | HDD | Culvert #100052; HDD under T-WR-S18 and Clarendon Ave |



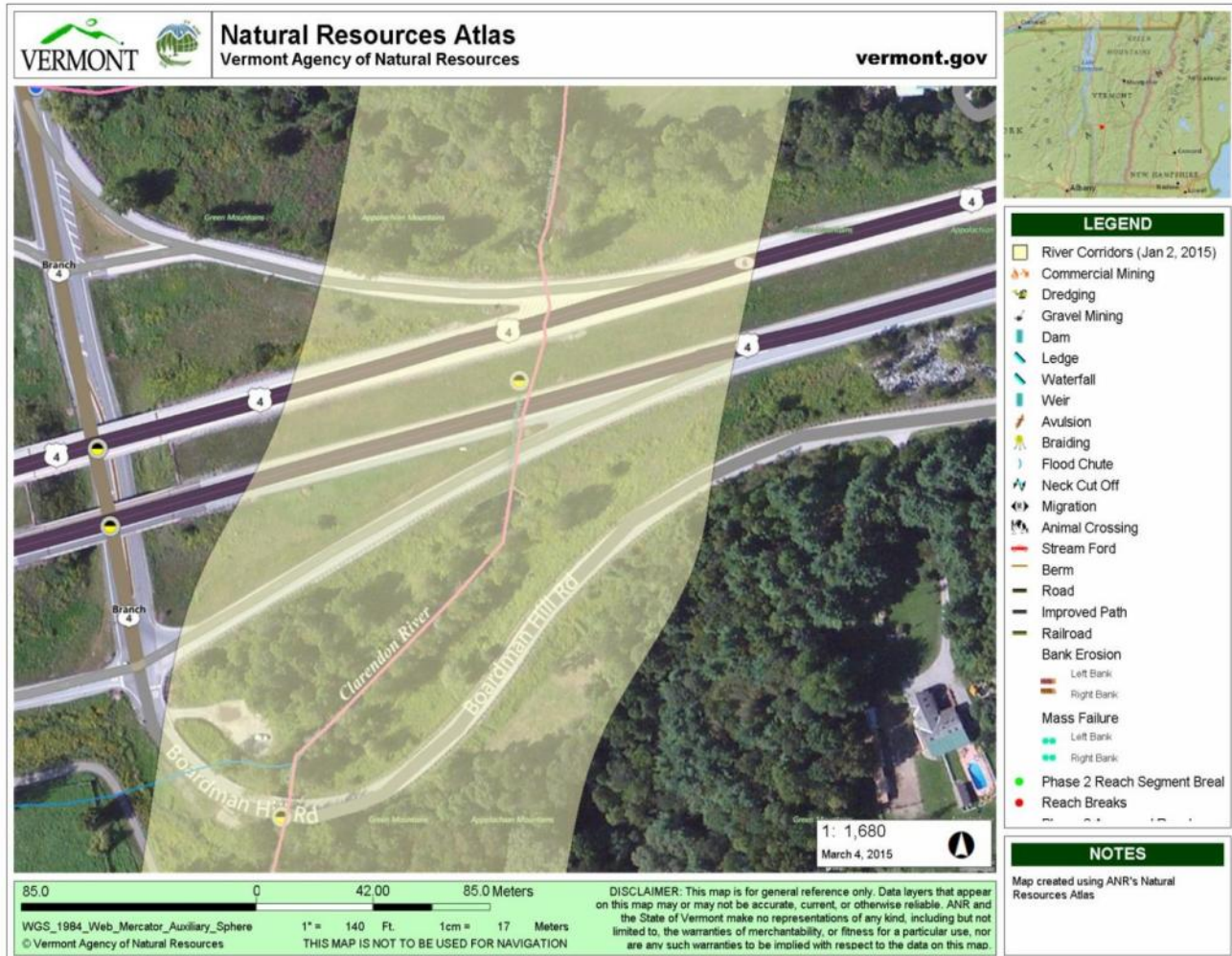
T-WR-S18 Downstream Channel



T-WR-S18 Upstream Channel

| Mile Post | Stream ID | Stream Name | Right of Way | Proposed Crossing Method | Comment / Crossing Description |
|-----------|-----------|-----------------|--------------------------|--------------------------|--|
| 123.8 | T-WR-S36 | Clarendon River | US Route 4; West Rutland | HDD | HDD under Clarendon River and Boardman Hill Rd; Adjacent Culvert #101184 |

No photographs of the structure are available at this time. An aerial image of the site from the ANR Natural Resources Atlas is pasted below.



| Mile Post | Stream ID | Stream Name | Right of Way | Proposed Crossing Method | Comment / Crossing Description |
|-----------|-----------|-------------|---------------------|--------------------------|--|
| 126.6 | T-RU-S2 | Otter Creek | US Route 4; Rutland | HDD | HDD under multiple sections of Otter Creek |



T-RU-S2 Downstream Channel



T-RU-S2 Upstream Channel

| Mile Post | Stream ID | Stream Name | Right of Way | Proposed Crossing Method | Comment / Crossing Description |
|-----------|-----------|-------------|-----------------------|--------------------------|-------------------------------------|
| 128.1 | T-CL-S6 | Cold River | US Route 7; Clarendon | HDD | HDD under Cold River and US-7 ramps |



T-CL-S6 Downstream Channel



T-CL-S6 Upstream Channel

| Mile Post | Stream ID | Stream Name | Right of Way | Proposed Crossing Method | Comment / Crossing Description |
|-----------|-----------|----------------------------------|-----------------------|--------------------------|--|
| 128.3 | T-CL-S8 | Unnamed Tributary to Otter Creek | US Route 7; Clarendon | HDD | Culvert #100056; HDD crossing US-7 and culvert |



T-CL-S8 Downstream Channel

| Mile Post | Stream ID | Stream Name | Right of Way | Proposed Crossing Method | Comment / Crossing Description |
|-----------|-----------|----------------------------------|-----------------------|--------------------------|--|
| 128.3 | T-CL-S8 | Unnamed Tributary to Otter Creek | US Route 7; Clarendon | HDD | Culvert #100056; HDD crossing US-7 and culvert |



T-CL-S8 Upstream Channel

| Mile Post | Stream ID | Stream Name | Right of Way | Proposed Crossing Method | Comment / Crossing Description |
|-----------|-----------|----------------------------------|-----------------------|--------------------------|--------------------------------|
| 128.7 | T-CL-S4 | Unnamed Tributary to Otter Creek | US Route 7, Clarendon | OTE | Culvert #21474; 48-inch CMP |



T-CL-S4 Upstream Channel / Culvert Inlet



T-CL-S4 Culvert Outlet / Downstream Channel

| Mile Post | Stream ID | Stream Name | Right of Way | Proposed Crossing Method | Comment / Crossing Description |
|-----------|-----------|----------------------------------|-----------------------|--------------------------|--|
| 129.6 | T-CL-S2 | Unnamed Tributary to Otter Creek | US Route 7, Clarendon | HDD | Culvert # 100059; 12-ft wide multi-plate pipe arch |



T-CL-S2 Downstream Channel



T-CL-S2 Upstream Channel

| Mile Post | Stream ID | Stream Name | Right of Way | Proposed Crossing Method | Comment / Crossing Description |
|-----------|-----------|---------------------------------|--------------------------|--------------------------|--------------------------------|
| 132.7 | V-SH-S-16 | Unnamed Tributary to Mill River | VT Route 103, Shrewsbury | At Culvert | Culvert #100062; 36-inch CMP |



V-SH-S-16 Culvert Inlet



V-SH-S-16 Culvert Outlet

| Mile Post | Stream ID | Stream Name | Right of Way | Proposed Crossing Method | Comment / Crossing Description |
|-----------|-----------|---------------------------------|--------------------------|--------------------------|--------------------------------|
| 132.7 | V-SH-S-16 | Unnamed Tributary to Mill River | VT Route 103, Shrewsbury | At Culvert | Culvert #100062; 36-inch CMP |



V-SH-S-16 Downstream Channel

| Mile Post | Stream ID | Stream Name | Right of Way | Proposed Crossing Method | Comment / Crossing Description |
|-----------|-----------|---------------------------------|--------------------------|--------------------------|--|
| 133.4 | V-SH-S-14 | Unnamed Tributary to Mill River | VT Route 103, Shrewsbury | Over Culvert | Culvert #100026; High embankment fill; install cable above existing 8-ft wide concrete box culvert |



V-SH-S-14 Culvert Inlet



V-SH-S-14 Upstream Channel

| Mile Post | Stream ID | Stream Name | Right of Way | Proposed Crossing Method | Comment / Crossing Description |
|-----------|-----------|---------------------------------|-------------------------------------|--------------------------|--|
| 134.4 | T-SH-S2 | Unnamed Tributary to Mill River | Green Mountain Railroad, Shrewsbury | HDD | Culvert #3; 14-ft wide granite block culvert |



T-SH-S2 Upstream Channel and Arc Culvert

| Mile Post | Stream ID | Stream Name | Right of Way | Proposed Crossing Method | Comment / Crossing Description |
|-----------|-----------|---------------------------------|-------------------------------------|--------------------------|--|
| 134.4 | T-SH-S2 | Unnamed Tributary to Mill River | Green Mountain Railroad, Shrewsbury | HDD | Culvert #3; 14-ft wide granite block culvert |



T-SH-S2 Downstream Channel

| Mile Post | Stream ID | Stream Name | Right of Way | Proposed Crossing Method | Comment / Crossing Description |
|-----------|-----------|---------------------------------|-------------------------------------|--------------------------|--|
| 135.5 | T-SH-S3 | Unnamed Tributary to Mill River | Green Mountain Railroad, Shrewsbury | OTE | Culvert #19; 14-ft granite block culvert |



T-SH-S3 Culvert Inlet

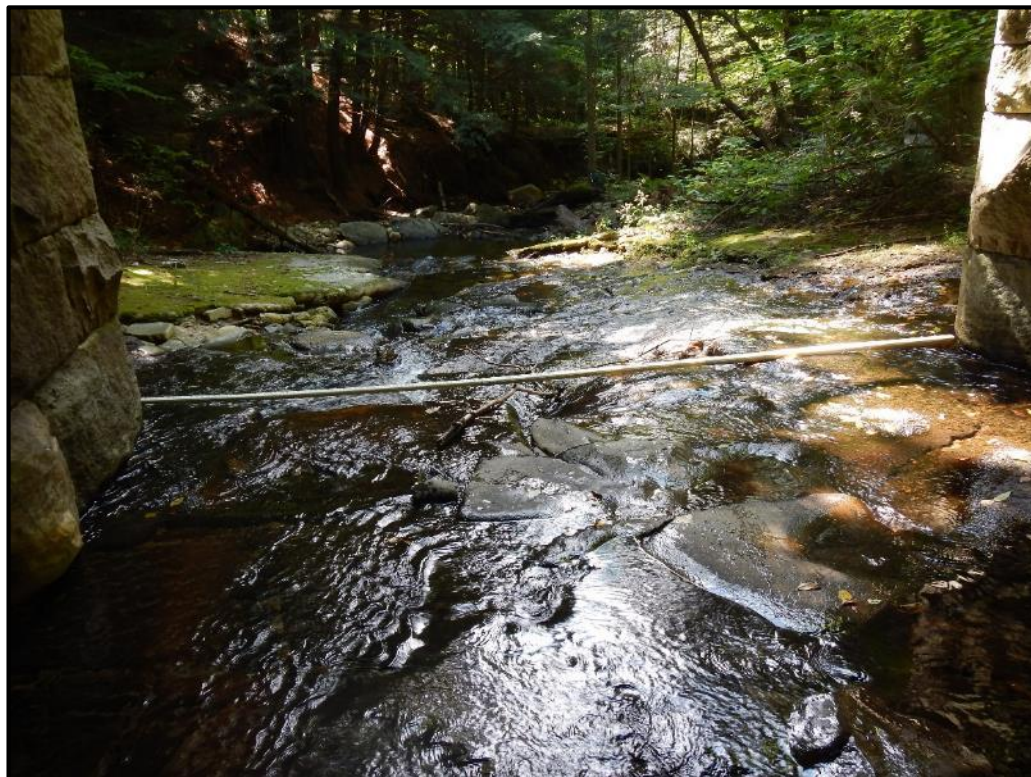


T-SH-S3 Upstream Channel

| Mile Post | Stream ID | Stream Name | Right of Way | Proposed Crossing Method | Comment / Crossing Description |
|-----------|-----------|---------------------------------|-------------------------------------|--------------------------|--|
| 135.5 | T-SH-S3 | Unnamed Tributary to Mill River | Green Mountain Railroad, Shrewsbury | OTE | Culvert #19; 14-ft granite block culvert |



T-SH-S3 Culvert Outlet



T-SH-S3 Downstream Channel

| Mile Post | Stream ID | Stream Name | Right of Way | Proposed Crossing Method | Comment / Crossing Description |
|-----------|-----------|---------------------------------|-------------------------------------|--------------------------|------------------------------------|
| 136.1 | T-SH-S7 | Unnamed Tributary to Mill River | Green Mountain Railroad, Shrewsbury | OTE | Culvert #25; 36-inch stone culvert |



T-SH-S7 Culvert Outlet



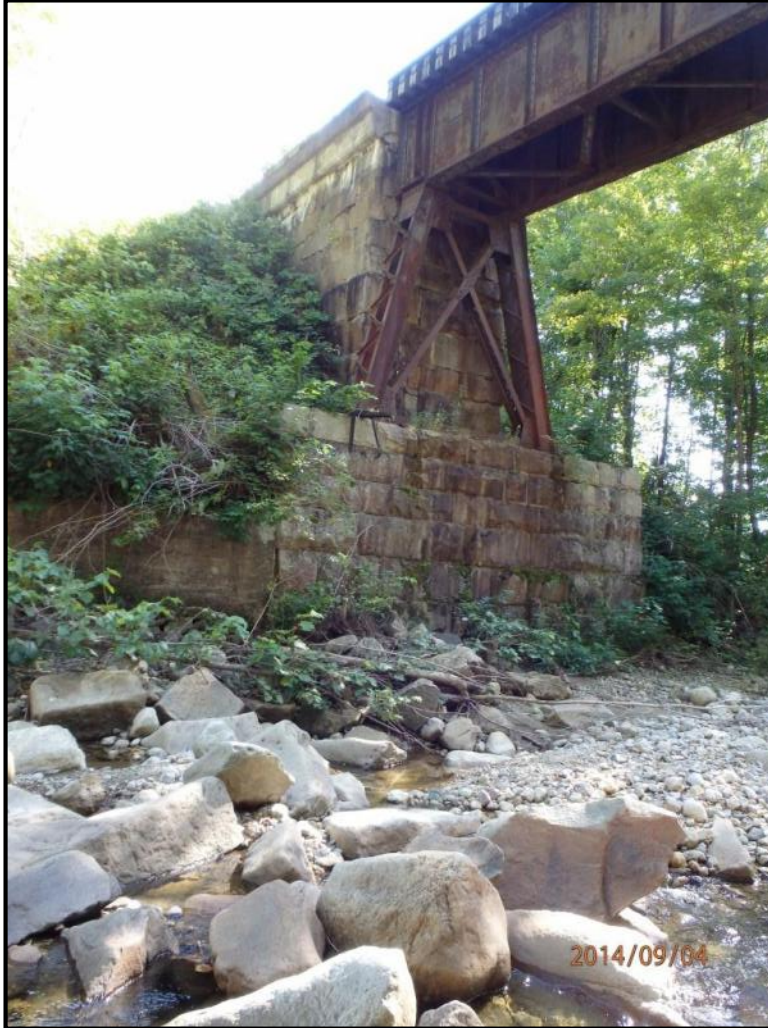
T-SH-S7 Downstream Channel

| Mile Post | Stream ID | Stream Name | Right of Way | Proposed Crossing Method | Comment / Crossing Description |
|-----------|-----------|---------------------------------|-------------------------------------|--------------------------|------------------------------------|
| 136.1 | T-SH-S7 | Unnamed Tributary to Mill River | Green Mountain Railroad, Shrewsbury | OTE | Culvert #25; 36-inch stone culvert |



T-SH-S7 Upstream Channel

| Mile Post | Stream ID | Stream Name | Right of Way | Proposed Crossing Method | Comment / Crossing Description |
|-----------|-----------|---------------|--------------------------------------|--------------------------|--|
| 136.9 | T-WA-S1 | Freeman Brook | Green Mountain Railroad, Wallingford | HDD | Culvert #38; HDD under Freeman Brook, Existing RR Bridge |



T-WA-S1 – Railroad Bridge at Freeman Brook

| Mile Post | Stream ID | Stream Name | Right of Way | Proposed Crossing Method | Comment / Crossing Description |
|-----------|-----------|---------------------------------|---------------------------|--------------------------|--------------------------------|
| 137.8 | V-WA-S106 | Unnamed Tributary to Mill River | VT Route 103, Wallingford | OTE | Culvert #100067; 24-inch CMP |



V-WA-S106 Upstream Channel



V-WA-S106 Culvert Inlet

| Mile Post | Stream ID | Stream Name | Right of Way | Proposed Crossing Method | Comment / Crossing Description |
|-----------|-----------|---------------------------------|---------------------------|--------------------------|--------------------------------|
| 137.8 | V-WA-S106 | Unnamed Tributary to Mill River | VT Route 103, Wallingford | OTE | Culvert #100067; 24-inch CMP |



V-WA-S106 Downstream Channel

| Mile Post | Stream ID | Stream Name | Right of Way | Proposed Crossing Method | Comment / Crossing Description |
|-----------|-----------|---------------------------------|---------------------------|--------------------------|--------------------------------|
| 137.9 | V-WA-S105 | Unnamed Tributary to Mill River | VT Route 103, Wallingford | At Culvert | Culvert #21188; 30-inch CMP |



V-WA-S105 Upstream Channel



V-WA-S105 Upstream Flood Berm

| Mile Post | Stream ID | Stream Name | Right of Way | Proposed Crossing Method | Comment / Crossing Description |
|-----------|-----------|---------------------------------|---------------------------|--------------------------|--------------------------------|
| 137.9 | V-WA-S105 | Unnamed Tributary to Mill River | VT Route 103, Wallingford | At Culvert | Culvert #21188; 30-inch CMP |



V-WA-S105 Downstream Channel

| Mile Post | Stream ID | Stream Name | Right of Way | Proposed Crossing Method | Comment / Crossing Description |
|-----------|-----------|---------------------------------|---------------------------|--------------------------|---------------------------------------|
| 139.3 | T-MH-S37 | Unnamed Tributary to Mill River | VT Route 103, Mount Holly | HDD | Culvert #100024; concrete box culvert |



T-MH-S37 Culvert Inlet



T-MH-S37 Culvert Outlet

| Mile Post | Stream ID | Stream Name | Right of Way | Proposed Crossing Method | Comment / Crossing Description |
|-----------|-----------|---------------------------------|---------------------------|--------------------------|--------------------------------|
| 140.4 | T-MH-S28 | Unnamed Tributary to Mill River | VT Route 103, Mount Holly | OTE | Existing roadway bridge |



T-MH-S28 Upstream Channel



T-MH-S28 Upstream Channel from beneath bridge

| Mile Post | Stream ID | Stream Name | Right of Way | Proposed Crossing Method | Comment / Crossing Description |
|-----------|-----------|---------------------------------|---------------------------|--------------------------|--------------------------------|
| 140.4 | T-MH-S28 | Unnamed Tributary to Mill River | VT Route 103, Mount Holly | OTE | Existing roadway bridge |



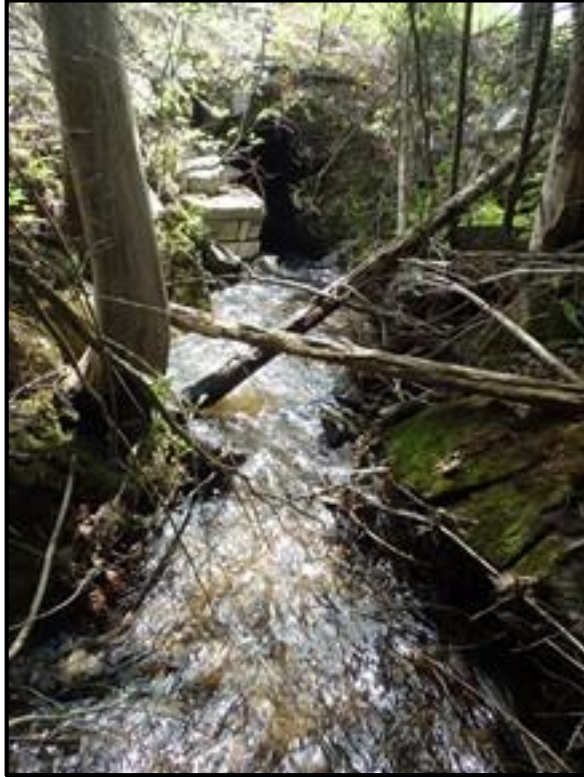
T-MH-S28 Downstream Channel

| Mile Post | Stream ID | Stream Name | Right of Way | Proposed Crossing Method | Comment / Crossing Description |
|-----------|------------|---------------------------------|---------------------------|--------------------------|--------------------------------|
| 141.8 | T-MH-AS-23 | Unnamed Tributary to Mill River | VT Route 103, Mount Holly | At Culvert | Culvert #20940; 66-inch CMP |



T-MH-AS-23 Culvert Outlet

| Mile Post | Stream ID | Stream Name | Right of Way | Proposed Crossing Method | Comment / Crossing Description |
|-----------|------------|---------------------------------|---------------------------|--------------------------|--------------------------------|
| 142.9 | T-MH-AS-20 | Unnamed Tributary to Mill River | VT Route 103, Mount Holly | At Culvert | Culvert #20955; 60-inch RCP |



T-MH-AS-20 Culvert Inlet



T-MH-AS-20 Culvert Outlet

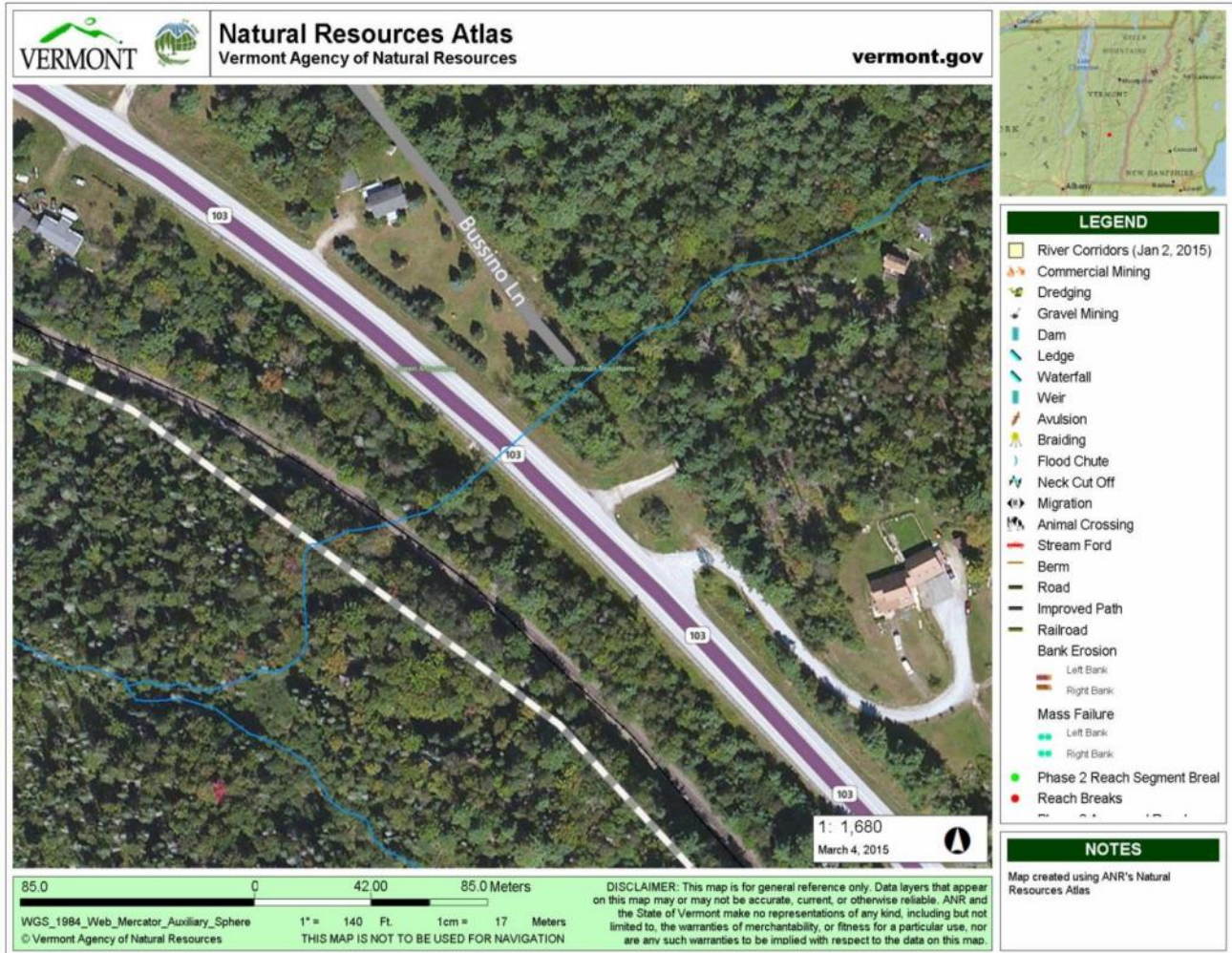
| Mile Post | Stream ID | Stream Name | Right of Way | Proposed Crossing Method | Comment / Crossing Description |
|-----------|------------|---------------------------------|---------------------------|--------------------------|--------------------------------|
| 142.9 | T-MH-AS-20 | Unnamed Tributary to Mill River | VT Route 103, Mount Holly | At Culvert | Culvert #20955; 60-inch RCP |



T-MH-AS-20 Downstream Channel

| Mile Post | Stream ID | Stream Name | Right of Way | Proposed Crossing Method | Comment / Crossing Description |
|-----------|------------|---------------------------------|---------------------------|--------------------------|--------------------------------|
| 143.2 | T-MH-AS-45 | Unnamed Tributary to Mill River | VT Route 103, Mount Holly | At Culvert | Culvert # 20965; 60-inch RCP |

No photographs of the structure are available at this time. An aerial image of the site from the ANR Natural Resources Atlas is pasted below.



| Mile Post | Stream ID | Stream Name | Right of Way | Proposed Crossing Method | Comment / Crossing Description |
|-----------|-----------|-----------------------------------|---------------------------|--------------------------|---------------------------------------|
| 144.8 | T-MH-S14 | Unnamed Tributary to Branch Brook | VT Route 103, Mount Holly | Over Culvert | Culvert #101203; Concrete Box Culvert |



T-MH-S-14 Upstream Channel



T-MH-S-14 Culvert Inlet

| Mile Post | Stream ID | Stream Name | Right of Way | Proposed Crossing Method | Comment / Crossing Description |
|-----------|-----------|-----------------------------------|---------------------------|--------------------------|---------------------------------------|
| 144.8 | T-MH-S14 | Unnamed Tributary to Branch Brook | VT Route 103, Mount Holly | Over Culvert | Culvert #101203; Concrete Box Culvert |



T-MH-S14 Downstream Channel

| Mile Post | Stream ID | Stream Name | Right of Way | Proposed Crossing Method | Comment / Crossing Description |
|-----------|-----------|--------------|---------------------------|--------------------------|--|
| 145.4 | T-MH-S10 | Branch Brook | VT Route 103, Mount Holly | HDD | HDD under Branch Brook while crossing under VT-103 |



T-MH-S10 Upstream Channel



T-MH-S10 from adjacent bank

| Mile Post | Stream ID | Stream Name | Right of Way | Proposed Crossing Method | Comment / Crossing Description |
|-----------|-----------|-----------------------------------|---------------------------|--------------------------|--|
| 146.4 | T-MH-S1 | Unnamed Tributary to Branch Brook | VT Route 103, Mount Holly | At Culvert | Culvert #20999, 6-ft CMP; gravel substrate |



T-MH-S1 Culvert Outlet



T-MH-S1 Downstream Channel

| Mile Post | Stream ID | Stream Name | Right of Way | Proposed Crossing Method | Comment / Crossing Description |
|-----------|-----------|-----------------------------------|---------------------------|--------------------------|--|
| 146.4 | T-MH-S1 | Unnamed Tributary to Branch Brook | VT Route 103, Mount Holly | At Culvert | Culvert #20999, 6-ft CMP; gravel substrate |



T-MH-S1 Culvert Interior

| Mile Post | Stream ID | Stream Name | Right of Way | Proposed Crossing Method | Comment / Crossing Description |
|-----------|-----------|---------------|----------------------|--------------------------|---|
| 147.9 | T-LU-S4 | Coleman Brook | VT Route 103, Ludlow | HDD | Culvert #100107; HDD under T-LU-S3, Coleman Brook, and Okemo Ridge Rd |



T-LU-S4 Upstream Channel



T-LU-S4 Culvert Interior

| Mile Post | Stream ID | Stream Name | Right of Way | Proposed Crossing Method | Comment / Crossing Description |
|-----------|-----------|--------------|----------------------|--------------------------|--|
| 148.2 | T-LU-S2 | Branch Brook | VT Route 100, Ludlow | HDD | HDD under Branch Brook, VT-103, and Barton Drive |



T-LU-S2, View toward VT Route 100 Bridge

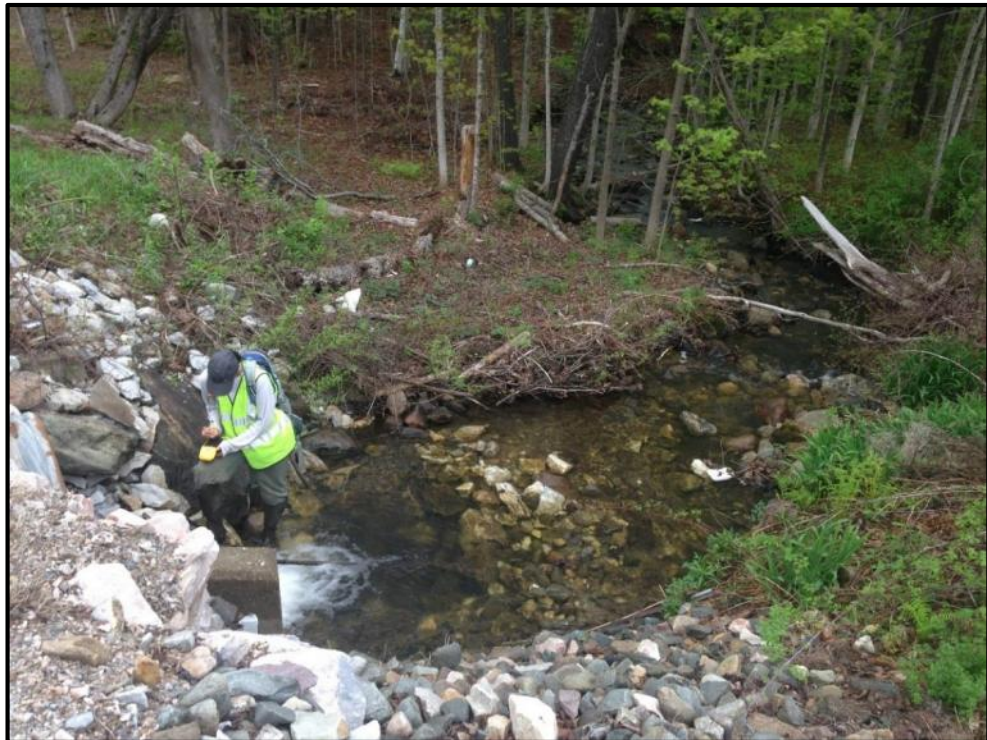


T-LU-S2, View of Channel upstream from VT Route 100 bridge

| Mile Post | Stream ID | Stream Name | Right of Way | Proposed Crossing Method | Comment / Crossing Description |
|-----------|-----------|----------------------------------|----------------------|--------------------------|---|
| 148.5 | T-LU-S5 | Unnamed Tributary to Black River | VT Route 100, Ludlow | Duct Bank | Culvert # 11597, 42-inch CMP, cobble substrate. |



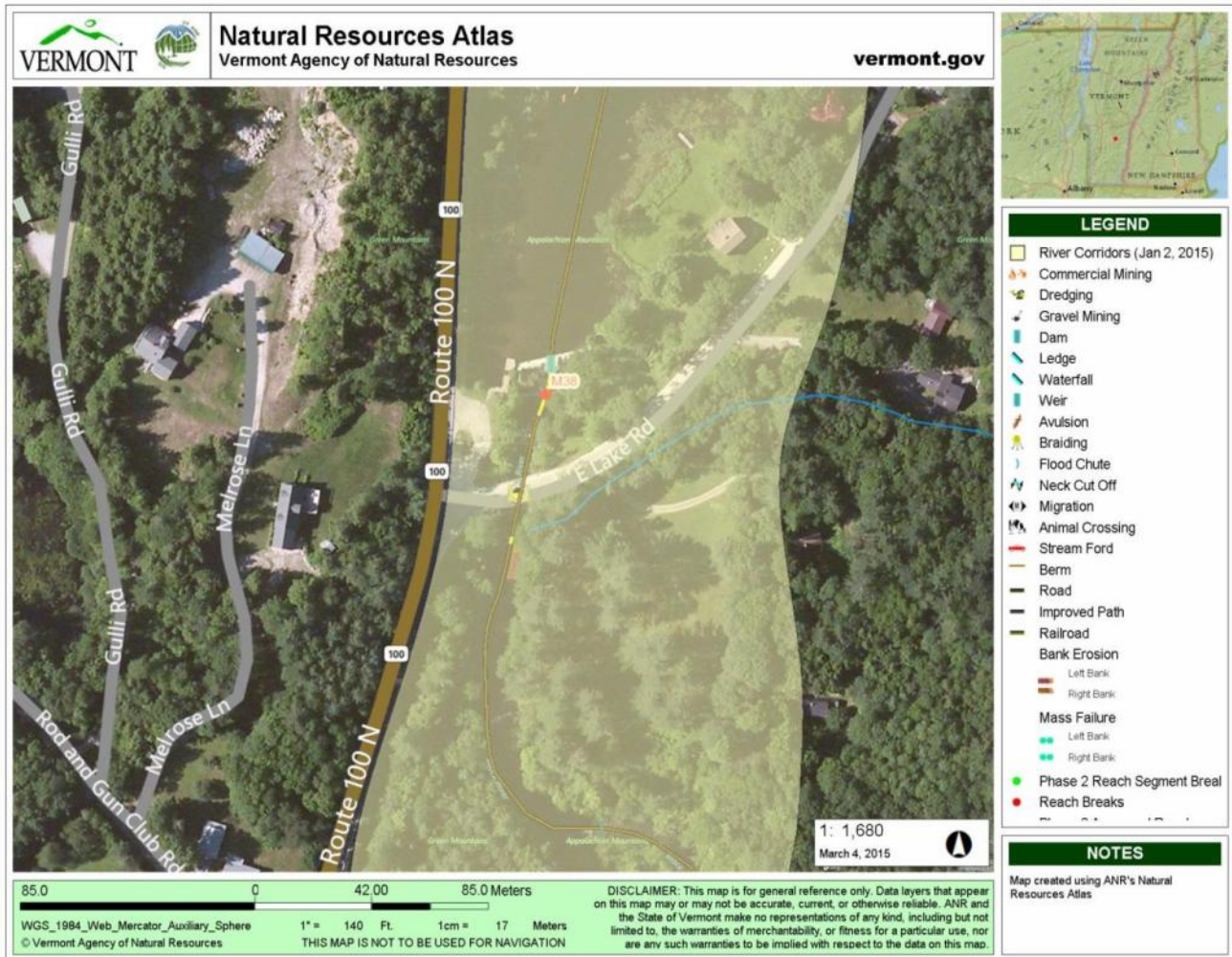
T-LU-S5 Upstream Channel



T-LU-S5 Culvert

| Mile Post | Stream ID | Stream Name | Right of Way | Proposed Crossing Method | Comment / Crossing Description |
|-----------|-----------|-------------|------------------------|--------------------------|--|
| 149.0 | T-LU-S1 | Black River | East Lake Road, Ludlow | Aerial | Hang on Black River Bridge; 51-ft span |

No photographs of the structure are available at this time. An aerial image of the site from the ANR Natural Resources Atlas is pasted below.



| Mile Post | Stream ID | Stream Name | Right of Way | Proposed Crossing Method | Comment / Crossing Description |
|-----------|-----------|----------------------------------|------------------------|--------------------------|--------------------------------|
| 150.4 | T-LU-S21 | Unnamed Tributary to Black River | East Lake Road, Ludlow | At Culvert | Culvert #100120; 32-inch CPP |



T-LU-S21 Upstream Channel



T-LU-S21 Downstream Channel

| Mile Post | Stream ID | Stream Name | Right of Way | Proposed Crossing Method | Comment / Crossing Description |
|-----------|-----------|----------------------------------|------------------------|--------------------------|--|
| 150.5 | T-LU-S20 | Unnamed Tributary to Black River | East Lake Road, Ludlow | Aerial | Culvert #100122, 84"x96"; 7-ft oval CMP; hang on concrete headwall |

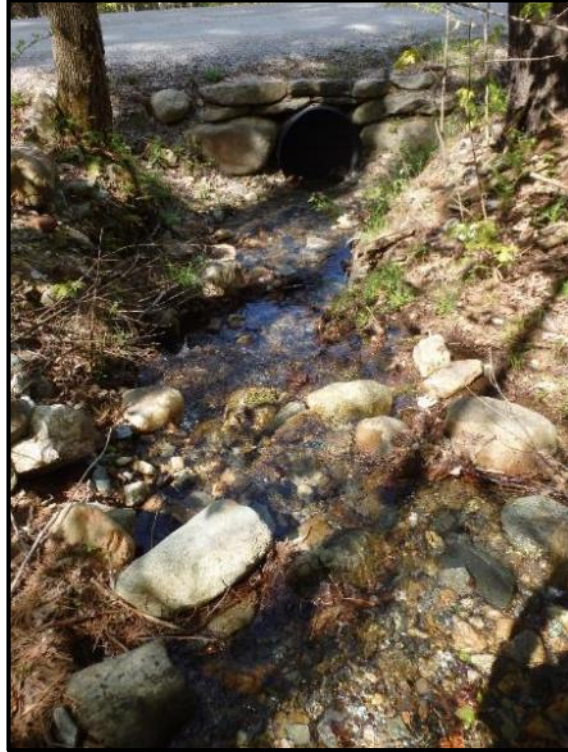


T-LU-S20 Culvert Inlet



T-LU-S20 Culvert Inlet

| Mile Post | Stream ID | Stream Name | Right of Way | Proposed Crossing Method | Comment / Crossing Description |
|-----------|-----------|----------------------------------|----------------------------|--------------------------|--------------------------------|
| 151.5 | T-LU-S15 | Unnamed Tributary to Black River | Pettiner Hill Road, Ludlow | At Culvert | Culvert #100129; 40-inch CPP |

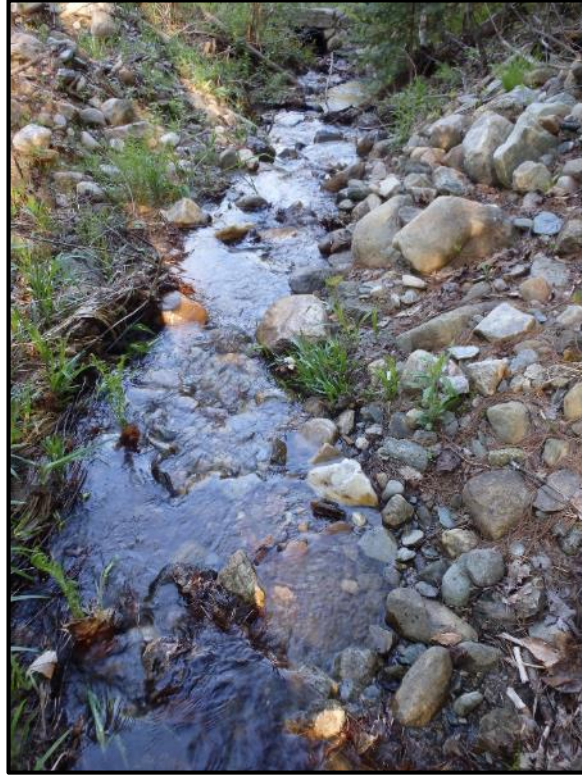


T-LU-S15 Culvert Inlet

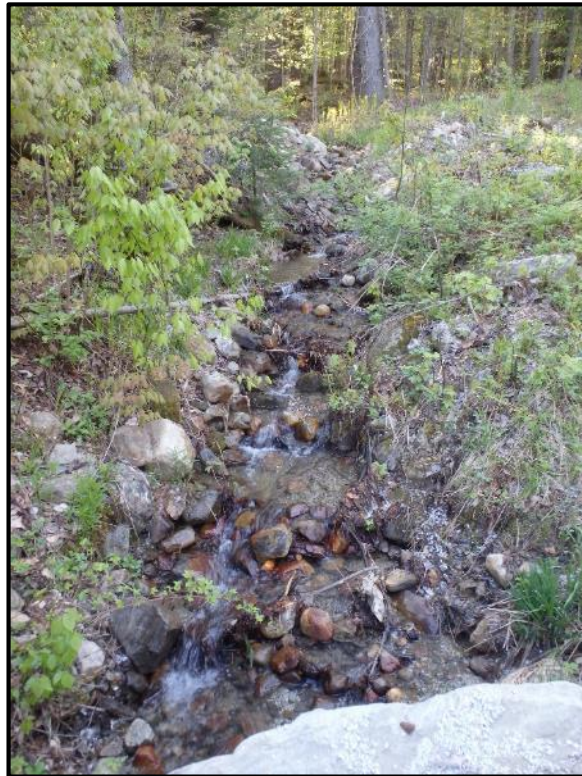


T-LU-S15 Culvert Outlet

| Mile Post | Stream ID | Stream Name | Right of Way | Proposed Crossing Method | Comment / Crossing Description |
|-----------|-----------|----------------------------------|----------------------------|--------------------------|--------------------------------|
| 151.6 | T-LU-S12 | Unnamed Tributary to Black River | Pettiner Hill Road, Ludlow | At Culvert | Culvert #100132; 24-inch CPP |

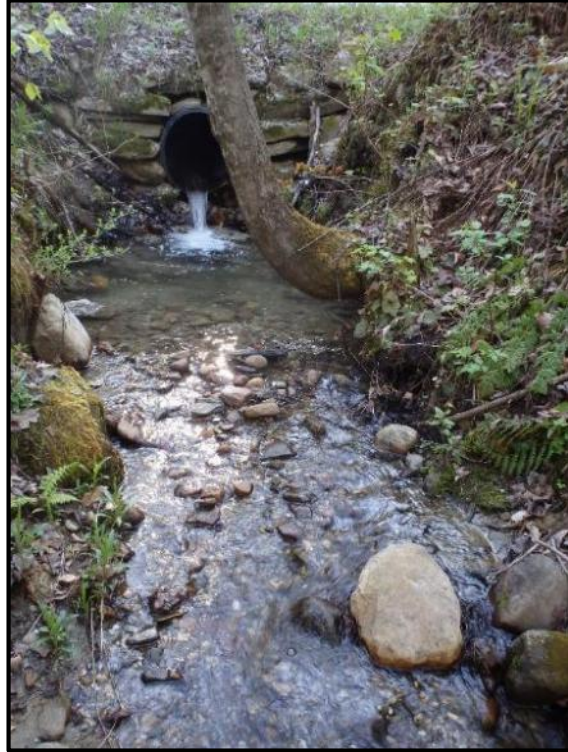


T-LU-S12 Upstream Channel

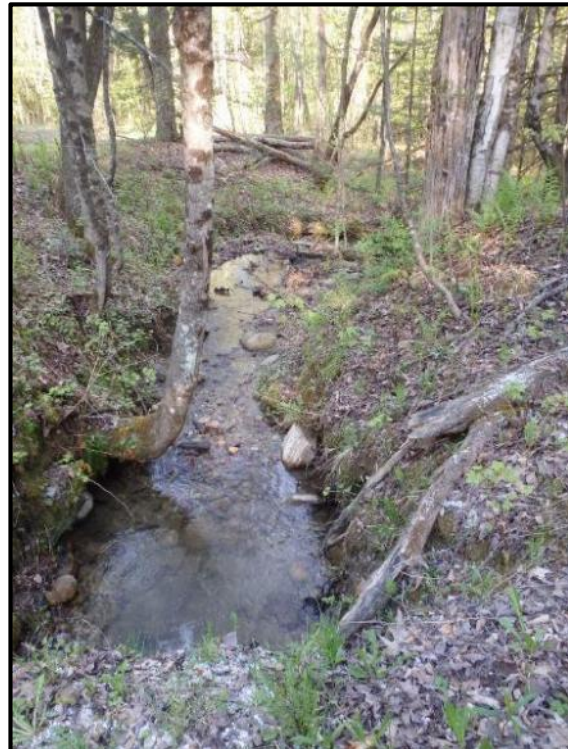


T-LU-S12 Upstream Channel

| Mile Post | Stream ID | Stream Name | Right of Way | Proposed Crossing Method | Comment / Crossing Description |
|-----------|-----------|----------------------------------|----------------------------|--------------------------|--------------------------------|
| 151.6 | T-LU-S12 | Unnamed Tributary to Black River | Pettiner Hill Road, Ludlow | At Culvert | Culvert #100132; 24-inch CPP |



T-LU-S12 Culvert Outlet



T-LU-S12 Downstream Channel